

Available Sheet Finishes

- Suede
- Sand
- Girobond
- Fineline 45°
- Fineline 90°
- Mirror
- Embossed
- Leather

Stock Sheet Finishes

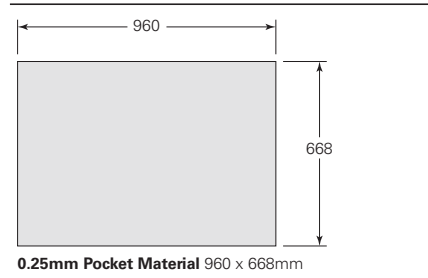
- Suede / Sand
- Girobond / Girobond
- Mirror / Fineline

Non-Standard Sheet Finishes

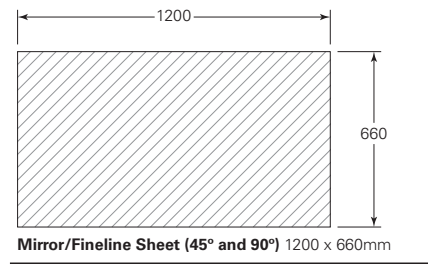
- Embossed / Sand
- Leather / Sand

0.25 Pocket Material 960 x 668mm  
Suede / Sand

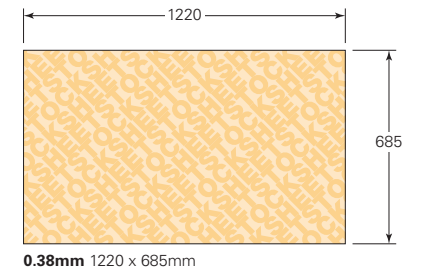
0.38mm 1220 x 685mm  
0.6 , 0.8mm 1220 x 665mm  
1.4 , 1.9mm 1360 x 650mm  
Mirror/Fineline 1200 x 660mm



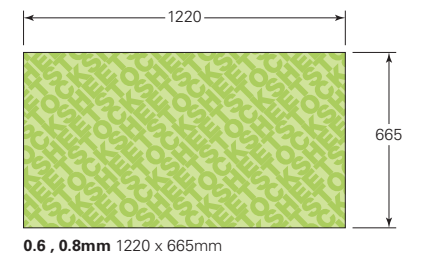
0.25mm Pocket Material 960 x 668mm



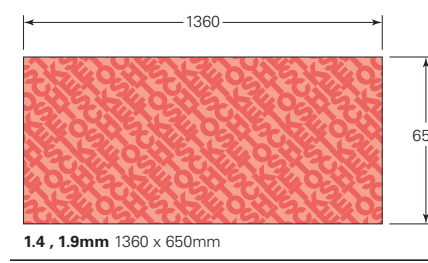
Mirror/Fineline Sheet (45° and 90°) 1200 x 660mm



0.38mm 1220 x 685mm



0.6 , 0.8mm 1220 x 665mm



1.4 , 1.9mm 1360 x 650mm

- 010 Clear**
- 110 White**
- 210 Yellow**  
Similar to PMS 115c or 107u
- 310 Orange**  
Similar to PMS 165c or 021u
- 455 Burgundy**  
Similar to PMS 195c
- 480 Red**  
Similar to PMS 1797c
- 510 Blue**  
Similar to PMS 3005u
- 520 Oxford Blue**  
Similar to PMS 287u
- 555 Genesis Blue**  
Similar to PMS 289u
- 610 Green**  
Similar to PMS 355c or 361u
- 620 Bottle Green**  
Similar to PMS 343c or 3298u
- 710 Grey**  
Similar to PMS Cool Grey 7c or 422u
- 735 Charcoal Grey**  
Similar to PMS 425c or 426u
- 738 Silver Ghost**  
Similar to PMS 421c or 877c (Silver)
- 910 Black**
- 107 Trans White**
- 206 Trans Yellow**  
Similar to PMS 101c or 101u
- 309 Trans Orange**  
Similar to PMS 158c
- 409 Trans Pink**  
Similar to PMS 2385c or 239u
- 484 New Trans Red**  
Similar to PMS 186c
- 492 Trans Purple**  
Similar to PMS 2587c or 266u
- 529 Trans Blue**  
Similar to PMS 299c
- 609 Trans Green**  
Similar to PMS 375u
- 733 Trans Grey**  
Similar to PMS Cool Grey 7c or 422u

**PMS Comparison is approximate only**

Sheet Colour to PMS Colour is a guide only. They do not match exactly. Some are closer to the Coated (c) or Uncoated (u) versions. Trans Colours are compared with a white backing behind trans colour swatch. We can match to PMS Colours subject to minimum order quantities.

**ecologia® - World's First Carbon Neutral Plastic Sheet!**

The ecologia® range of polypropylene sheet is manufactured from 100% recycled post-industrial material, which may result in colour variations between sheets.  
Being 100% recycled, ecologia® creates fewer emissions and any CO2 it produces is now offset by certified carbon credits.  
This means producing ecologia® adds zero net CO2 to the atmosphere.

**100% Recycled 100% Benefits**

- 100 marmo®**  
Marble-like speckled sheet
- 618 transec®**  
Translucent Sheet
- 091 Gold fluid®**  
Multi-layered - Glossy Metallic-like Gold on front with a Black Back
- 096 Blue fluid®**  
Multi-layered - Glossy Metallic-like Blue on front with a Black Back
- 900 Eco Black (Not Stock)**  
Certified Carbon Neutral Black Sheet

ecologia® sheet is certified by The Carbon Reduction Institute in accordance with the World Business Council for Sustainable Development's Greenhouse Gas Protocol and international standard ISO 14040/2 for life cycle assessment. Our greenhouse gas emissions audit covered the whole product life cycle. This includes emissions from electricity, water, freight, staff travel, purchased materials and occasional activities. Whatever emissions we can't reduce are offset through purchasing certified carbon credits. Megara reports quarterly and is re-audited annually by The Carbon Reduction Institute to ensure that our carbon neutral status remains valid. Refer to [www.megara.com.au](http://www.megara.com.au)